

BIO-BOX

PATENTED BY AS UNITS



2020 AS UNITS SgI
TUTTI I DIRITTI RISERVATI
2020 AS UNITS SgI
ALL RIGHTS RESERVED

© **Bio-Box**



AS UNITS sagI | via Carlo Pasta 9b - 6850 Mendrisio - Svizzera
MENDRISIO +41.9.12281012 | MILANO +39.02.39449011

info@bio-box.it | Bio-Box is exclusive patent by AS UNITS SgI | www.bio-box.it

Bio-Box singolo
versione copri bidone e portasacco

single Bio-Box suitable for
bin covering and plastic bag holder



1x **SERIE H100**



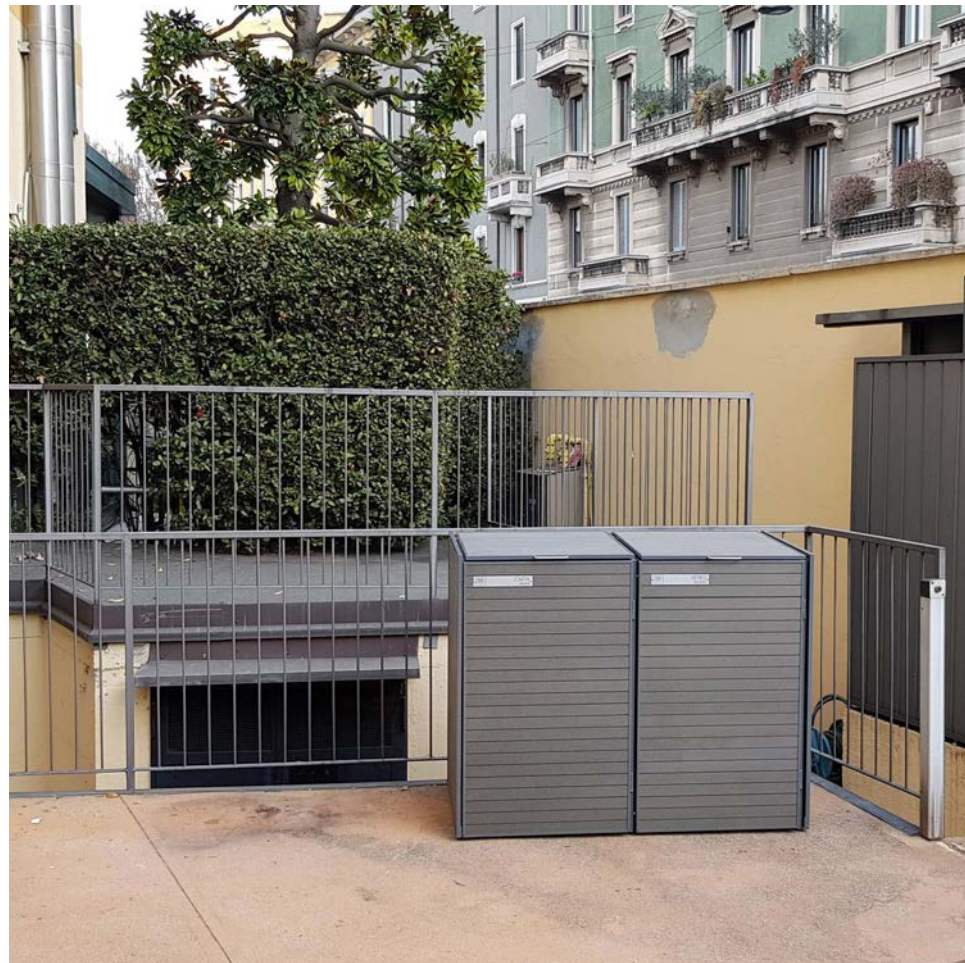
1x **SERIE H100**

Bio-Box
possibili configurazioni

Bio-Box
feasible arrangements



11x **SERIE H115**



2x **SERIE H115**



5x **SERIE H115** • 5x **SERIE H115**



3x **SERIE H115** • 5x **SERIE H100**



4x **SERIE H115**



3x **SERIE H115** • 2x **SERIE H100**



5x **SERIE H115**



7x **SERIE H115** • 6x **SERIE H115**



3x **SERIE H115**



4x **SERIE H115**



3x **SERIE H115** • 2x **SERIE H100** • 3x **SERIE H100**



3x **SERIE H100**



5x **SERIE H85**



2x **SERIE H85** • 2x **SERIE H85**

prima e dopo
installazione Bio-Box

before and after
Bio-Box installation



2x **SERIE H115** • 12x **SERIE H115**



2x **SERIE H115** • 3x **SERIE H115** • 3x **SERIE H115**



13x **SERIE H115**



3x **SERIE H115** • 10x **SERIE H115**



14x **SERIE H115**



12x **SERIE H100**

mix di formati Bio-Box

mixture of Bio-Box sizes



3x **SERIE H115** • 5x **SERIE H85**



4x **SERIE H115**



1x **SERIE H85** • 3x **SERIE H115**



4x **SERIE H115** • 1x **SERIE H115** • 4x **SERIE H85**



2x **SERIE H85** • 2x **SERIE H100**



2x **SERIE H115** • 2x **SERIE H115** • 4x **SERIE H85** • 2x **SERIE H100**

chiusura posteriore in Wpc

Wpc back panels



5x **SERIE H115** • 6x **SERIE H100**



4x **SERIE H115** • 5x **SERIE H115**

sacchi pieni in eccesso,
cartoni e rifiuti extra

extra plastic bags,
cardboards and other extra rubbish



3x **SERIE H115**



5x **SERIE H100**

armadiature Bio-Box
e realizzazioni su misura

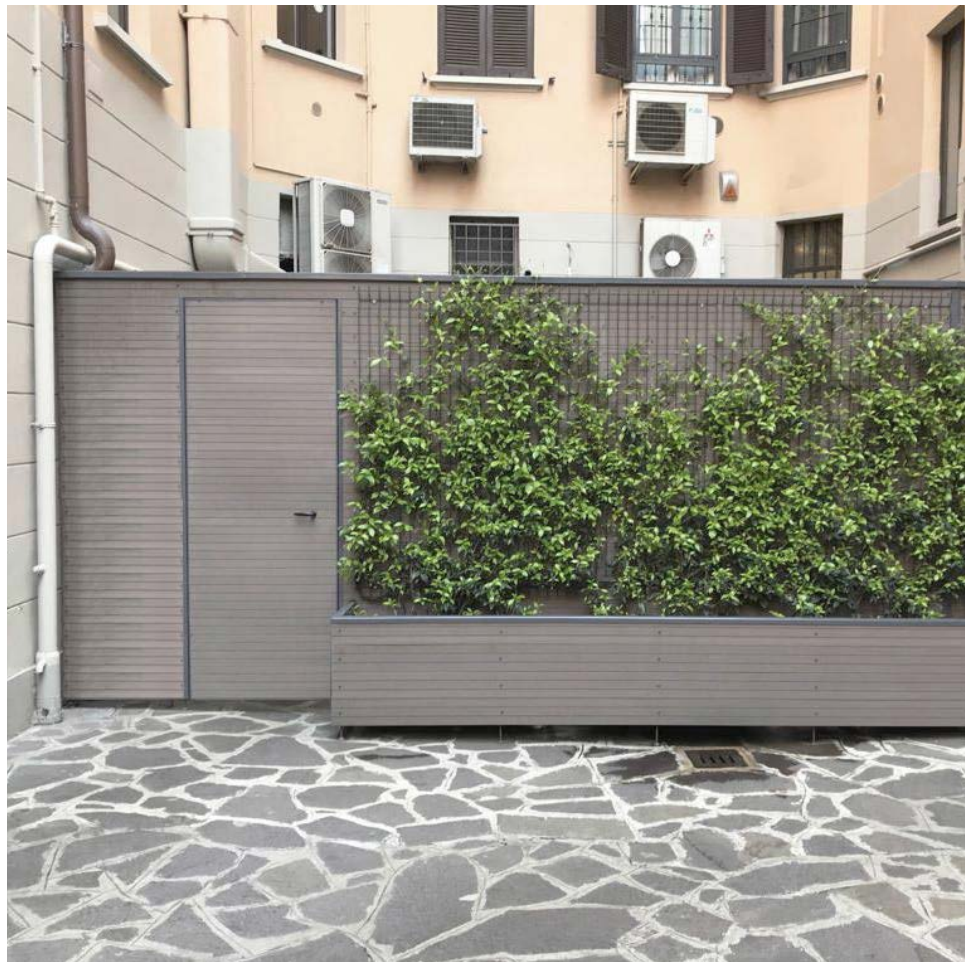
high Bio-Box
and custom made solutions



9x **SERIE H200**



4x **SERIE H200** • 3x **SERIE H100**



WPC WALL • WPC DOOR • WPC FLOWERS BOX



WPC WALL • 1x SERIE H100 • 3x SERIE H115



FORMATI BIO-BOX

BIO-BOX SIZES

altezza	dimensione bidoni / bin dimension			height
86cm	93cm	107cm	112cm	
larghezza				width
53cm	48cm	58cm	62cm	
profondità				depth
53cm	55cm	73cm	86cm	



110LT

BIO-BOX
SERIE
H85



120LT

BIO-BOX
SERIE
H100



240LT

BIO-BOX
SERIE
H115



360LT

BIO-BOX
SERIE
H120



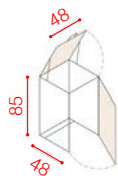
altezza	dimensione bidoni / bin dimension			height
85cm	100cm	115cm	120cm	
larghezza				width
48cm	56cm	68cm	75cm	
profondità				depth
48cm	62cm	80cm	95cm	



SERIE H85

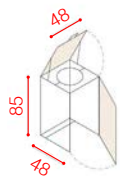
ingombro esterno modelli (cm)

models external dimensions (cm)



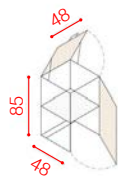
85/48

TELAIO+COPERCHIO+FRONTE
FRAME+TOP+FRONT



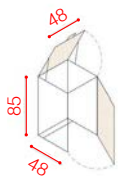
PS

PORTA SACCO
BAG HOLDER



RPVC

RIPIANO INTERNO
INTERNAL SHELF



SE

SACCHI IN ECCESSO
EXTRA RUBBISH

cosa può contenere

what it may contain



BIDONE 20-80 LT
BIN 20-80 LT



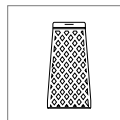
SACCO
PLASTIC BAG



BIDONE 20-80 LT
BIN 20-80 LT



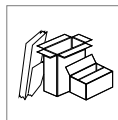
SACCHI
PLASTIC BAGS



110LT
110LT



ALTRI OGGETTI
EXTRA



CARTONI
CARDBOARDS

altezza / height = **MAX 80cm** • larghezza / width = **MAX 43cm** • profondità / depth = **MAX 41cm**

TELAI FRAMES

85 / 48

BIO-BOX ADATTO A CONTENERE BIDONI INFERIORI A 120LT

BIO-BOX SUITABLE FOR COVERING BINS SMALLER THAN 120LT

telaio 85/48 + coperchio in wpc + anta frontale in wpc
frame 85/48 + wpc top door + wpc front door

85 / 48SE

BIO-BOX ADATTO A CONTENERE SACCHI / RIFIUTI IN ECCESSO
BIO-BOX SUITABLE FOR COVERING EXTRA RUBBISH

telaio 85/48 + coperchio in wpc + anta frontale in wpc
frame 85/48 + wpc top door + wpc front door

85 / PS

porta sacco
plastic bag holder

85 / RPVC

ripiano interno in pvc per carichi leggeri
pvc internal shelf for light loads

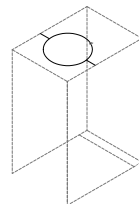
85 / CLW

chiusura laterale in wpc
wpc lateral panel

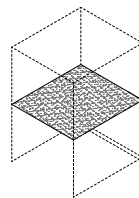
85 / CPW

chiusura posteriore in wpc
wpc rear panel

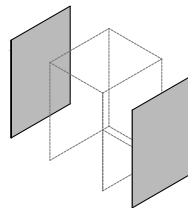
PS



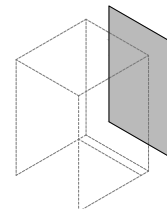
RPVC



CLW



CPW



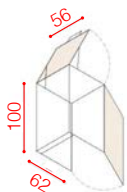
ACCESSORI OPTIONALS



SERIE H100

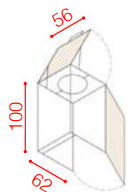
ingombro esterno modelli (cm)

models external dimensions (cm)



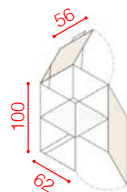
100/56

TELAIO+COPERCHIO+FRONTE
FRAME+TOP+FRONT



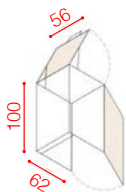
PS

PORTA SACCO
BAG HOLDER



RPVC

RIPIANO INTERNO
INTERNAL SHELF



SE

SACCHI IN ECCESSO
EXTRA RUBBISH

cosa può contenere

what it may contain



BIDONE 120 LT
BIN 120 LT



SACCO
PLASTIC BAG



BIDONE < 120 LT
BIN < 120 LT



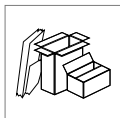
SACCHI
PLASTIC BAGS



110LT
110LT



ALTRI OGGETTI
EXTRA



CARTONI
CARDBOARDS

altezza / height = **MAX 95cm** • larghezza / width = **MAX 51cm** • profondità / depth = **MAX 55cm**

TELAI FRAMES

100 / 56

BIO-BOX ADATTO A CONTENERE BIDONI FINO A 120LT

BIO-BOX SUITABLE FOR COVERING 120LT BIN

telaio 100/56 + coperchio in wpc + anta frontale in wpc
frame 100/56 + wpc top door + wpc front door

100 / 56SE

BIO-BOX ADATTO A CONTENERE SACCHI / RIFIUTI IN ECCESSO

BIO-BOX SUITABLE FOR COVERING EXTRA RUBBISH

telaio 100/56 + coperchio in wpc + anta frontale in wpc
frame 100/56 + wpc top door + wpc front door

100 / PS

porta sacco
plastic bag holder

100 / RPVC

ripiano interno in pvc per carichi leggeri
pvc internal shelf for light loads

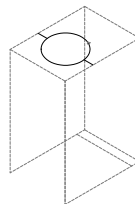
100 / CLW

chiusura laterale in wpc
wpc lateral panel

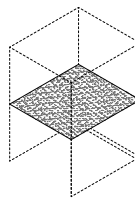
100 / CPW

chiusura posteriore in wpc
wpc rear panel

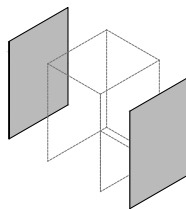
PS



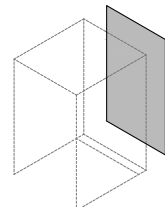
RPVC



CLW



CPW



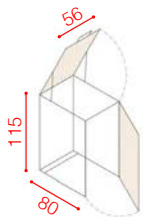
ACCESSORI OPTIONALS



ingombro esterno modelli (cm)

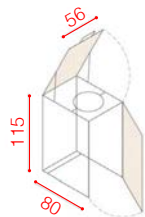
SERIE H115

models external dimensions (cm)



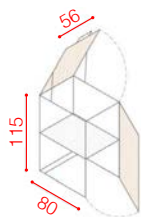
115/56

TELAIO+COPERCHIO+FRONTE
FRAME+TOP+FRONT



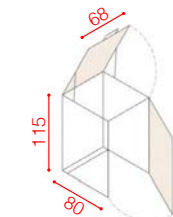
PS

PORTA SACCO
BAG HOLDER



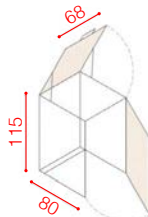
RPVC

RIPIANO INTERNO
INTERNAL SHELF



115/68

TELAIO+COPERCHIO+FRONTE
FRAME+TOP+FRONT



SE

SACCHI IN ECCESSO
EXTRA RUBBISH

cosa può contenere

what it may contain



BIDONE 120 LT
BIN 120 LT



SACCO
PLASTIC BAG



BIDONE < 120 LT
BIN < 120 LT



BIDONE 120 LT
BIN 120 LT



SACCHI
PLASTIC BAGS



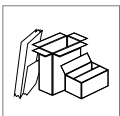
110LT
110LT



ALTRI OGGETTI
EXTRA



BIDONE 240 LT
BIN 240 LT



CARTONI
CARDBOARDS

altezza / height = **MAX 107cm** • larghezza / width = **MAX 63cm** • profondità / depth = **MAX 73cm**

TELAI FRAMES

115 / 56

BIO-BOX ADATTO A CONTENERE BIDONI FINO A 120LT
BIO-BOX SUITABLE FOR COVERING 120LT BIN

telai 115/56 + coperchio in wpc + anta frontale in wpc
frame 115/56 + wpc top door + wpc front door

115 / 68

BIO-BOX ADATTO A CONTENERE BIDONI FINO A 240LT
BIO-BOX SUITABLE FOR COVERING 240LT BIN

telai 115/68 + coperchio in wpc + anta frontale in wpc
frame 115/68 + wpc top door + wpc front door

115 / 68SE

BIO-BOX ADATTO A CONTENERE SACCHI / RIFIUTI IN ECCESSO
BIO-BOX SUITABLE FOR COVERING EXTRA RUBBISH

telai 115/68 + coperchio in wpc + anta frontale in wpc
frame 115/68 + wpc top door + wpc front door

115 / PS

porta sacco
plastic bag holder

115 / RPVC

ripiano interno in pvc per carichi leggeri
pvc internal shelf for light loads

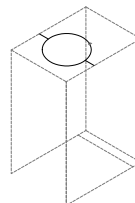
115 / CLW

chiusura laterale in wpc
wpc lateral panel

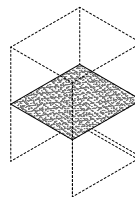
115 / CPW

chiusura posteriore in wpc
wpc rear panel

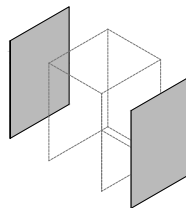
PS



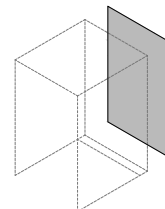
RPVC



CLW



CPW



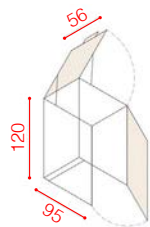
ACCESSORI OPTIONALS



SERIE H120

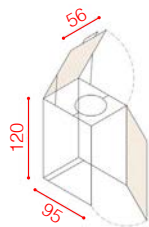
ingombro esterno modelli (cm)

models external dimensions (cm)



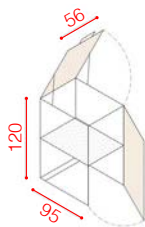
120/56

TELAIO+COPERCHIO+FRONTE
FRAME+TOP+FRONT



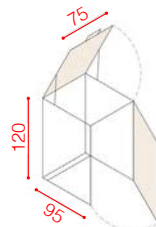
PS

PORTA SACCO
BAG HOLDER



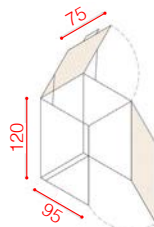
RPVC

RIPIANO INTERNO
INTERNAL SHELF



120/75

TELAIO+COPERCHIO+FRONTE
FRAME+TOP+FRONT



SE

SACCHI IN ECCESSO
EXTRA RUBBISH

cosa può contenere

what it may contain



BIDONE 120 LT
BIN 120 LT



SACCO
PLASTIC BAG



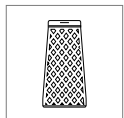
BIDONE < 120 LT
BIN < 120 LT



BIDONE 240 LT
BIN 240 LT



SACCHI
PLASTIC BAGS



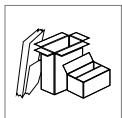
110LT
110LT



ALTRI OGGETTI
EXTRA



BIDONE 360 LT
BIN 360 LT



CARTONI
CARDBOARDS

altezza / height = **MAX 112cm** • larghezza / width = **MAX 70cm** • profondità / depth = **MAX 88cm**

TELAI FRAMES

120 / 56

BIO-BOX ADATTO A CONTENERE BIDONI FINO A 120LT

BIO-BOX SUITABLE FOR COVERING 120LT BIN

telaio 120/75 + coperchio in wpc + anta frontale in wpc
frame 120/56 + wpc top door + wpc front door

120 / 75

BIO-BOX ADATTO A CONTENERE BIDONI DA 240/360LT

BIO-BOX SUITABLE FOR COVERING 240LT AND 360LT BIN

telaio 120/75 + coperchio in wpc + anta frontale in wpc
frame 120/75 + wpc top door + wpc front door

120 / 75SE

BIO-BOX ADATTO A CONTENERE SACCHI / RIFIUTI IN ECCESSO

BIO-BOX SUITABLE FOR COVERING EXTRA RUBBISH

telaio 120/75 + coperchio in wpc + anta frontale in wpc
frame 120/75 + wpc top door + wpc front door

120 / PS

porta sacco
plastic bag holder

120 / RPVC

ripiano interno in pvc per carichi leggeri
pvc internal shelf for light loads

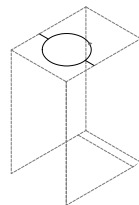
120 / CLW

chiusura laterale in wpc
wpc lateral panel

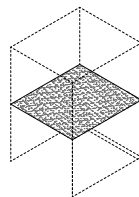
120 / CPW

chiusura posteriore in wpc
wpc rear panel

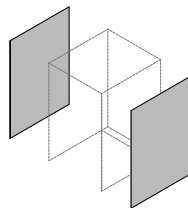
PS



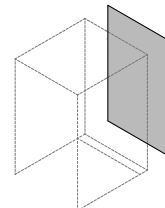
RPVC



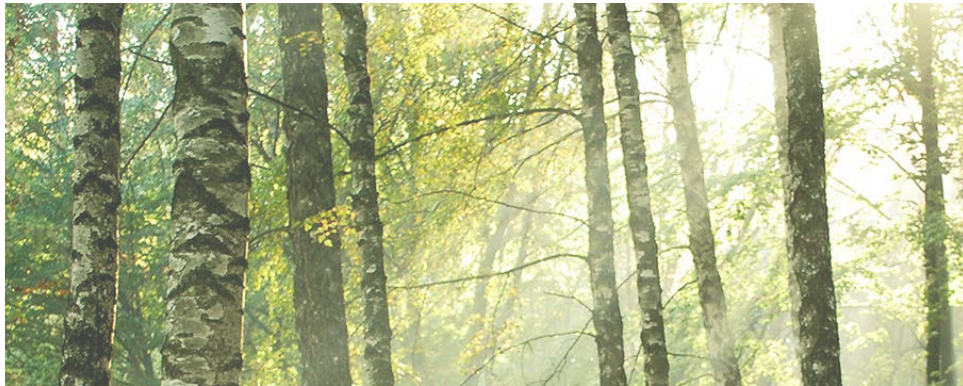
CLW



CPW



ACCESSORI OPTIONALS



FINITURA WPC

WPC FINISHING



Il legno composito WPC (Wood Plastic Composite) viene prodotto utilizzando legno per il 50% e plastica per il 50%. È un materiale artificiale creato per estrusione a caldo legando fibre naturali di legno polverizzato a una resina speciale formata da polimeri e additivi. I pannelli realizzati sono del tutto simili esteticamente al legno naturale, ma resistenti come se fossero delle resine plastiche.

Il legno composito è una soluzione molto apprezzata per pavimenti e rivestimenti esterni in quanto permette di avere risultati di notevole impatto estetico e di lunga durata.

Analizzando il fattore ambientale possiamo definirlo eco-friendly, riduce l'utilizzo del legno stesso, consente di abbattere meno alberi e il suo processo di fabbricazione non rilascia sostanze inquinanti in ambiente. Il fatto che non necessiti di trattamenti di manutenzione con olii o vernici, contribuisce ulteriormente al rispetto per l'ambiente. È un materiale riciclabile al 100% dato che alla fine del proprio ciclo di vita può essere estruso nuovamente o utilizzato come combustibile nei termovalorizzatori.

Rispetto al legno naturale: non si rompe; non si deforma; non diventa spinoso; non si secca; è impermeabile all'acqua in virtù di una composizione di tipo idrorepellente data dal polimero contenuto al proprio interno; è resistente all'abrasione; è anti tarle e insetti; è antisettico e non è attaccabile da agenti micotici; ha una notevole resistenza ai carichi; è resistente ai raggi UV, non risente dell'invecchiamento provocato dai raggi solari; ha un'ottima resistenza al fuoco e alle variazioni di temperatura; non si surriscalda anche se sottoposto a ore di esposizione al sole e si asciuga rapidamente.

La bellezza del legno senza i suoi svantaggi.

Wood Plastic Composites (WPC) consists of a mixture of wood fiber and flour, thermoplastic resins and other additives. Still maintaining the elegance and all the qualities of wood, it has several advantages of a not completely natural material, but not its defects.

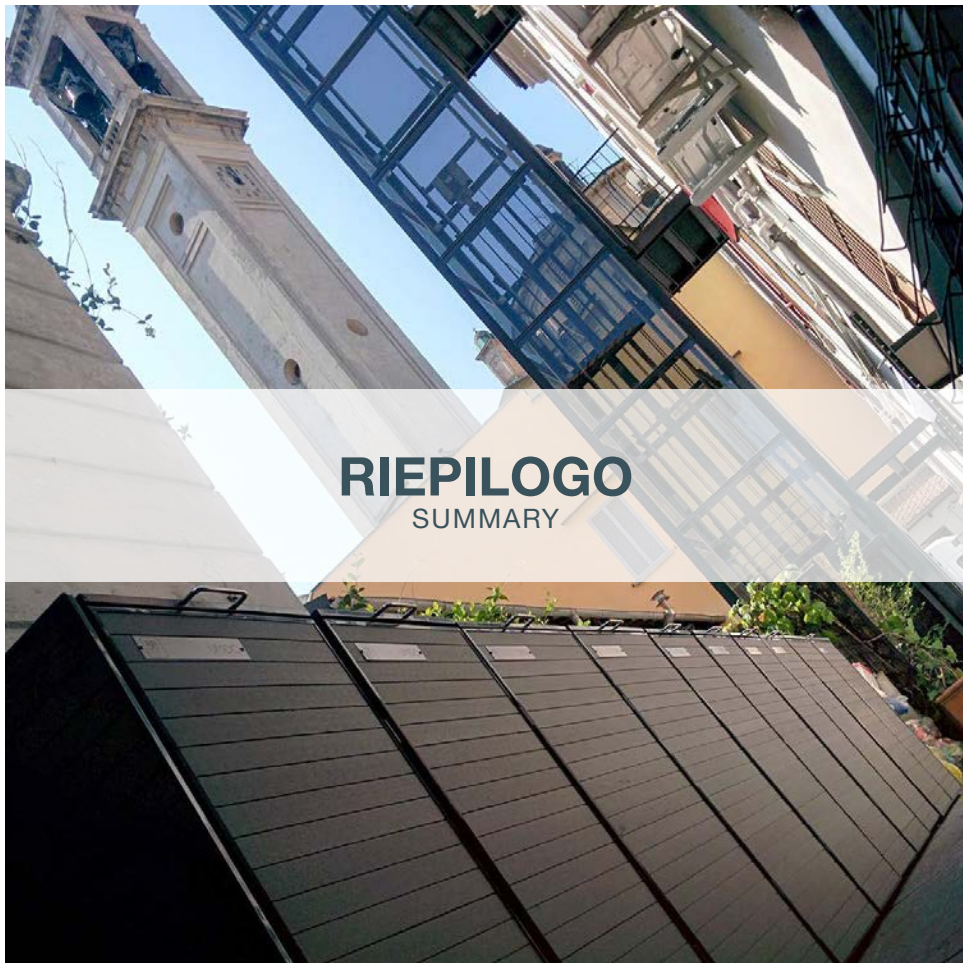
This material can be used outside for decades without any deterioration, the polymeric component allows it to better resist the deterioration due to the sea climate and salty water. Furthermore, it has no splinters and is easy to clean (it's suggested to clean it by using neutral floor detergents) thanks to the well-thought combination of wood and polyethylene, that restrain the growth of mould and fungus. The poly-propylene used in the composite material turns out to resist up to 70-85 degrees, still maintaining the necessary mechanical features.

The Wpc finishing resists the UV rays damage thanks to a special composition of pigments and UV absorbers contained in the polymeric composite that allow it to don't lose color. The material resist heavy loads: laboratory tests have proven resistance to several strains and twists to which the material may be exposed during its lifetime.

Thanks to encapsulated water-repellent fibers is water resistant. Finally, the composite materials require no maintenance, it is long-lasting, it's stable and it does not warp, it resist to temperature variations, it's sun-ice-rain resistant, it has excellent resistance to fire. The Wpc can be extruded again at the end of its life cycle. It can be 100% recycled up to 20 times, with no need of adding any other components and with no physical or mechanical alterations.

Wood's beauty without its defects.

CARATTERISTICHE E CONFRONTO COL LEGNO
CHARACTERISTICS AND COMPARISON WITH WOOD



RIEPILOGO

SUMMARY

2020 AS UNITS Sagl
TUTTI I DIRITTI RISERVATI
2020 AS UNITS Sagl
ALL RIGHTS RESERVED

© **Bio-Box**

Serie 85

85 / 48	< 120LT
85 / 48SE	
85 / PS	
85 / RPVC	
85 / CLW	
85 / CPW	

Serie 100

100 / 56	120LT
100 / 56SE	
100 / PS	
100 / RPVC	
100 / CLW	
100 / CPW	

Serie 115

115 / 56	120LT
115 / 68	240LT
115 / 68SE	
115 / PS	
115 / RPVC	
115 / CLW	
115 / CPW	

Serie 120

120 / 56	120LT
120 / 75	240LT / 360LT
120 / 75SE	
120 / PS	
120 / RPVC	
120 / CLW	
120 / CPW	

BIO-BOX

PATENTED BY AS UNITS